



**Matthew Dempsey**

**Chairman**

**The Agricultural Trust / Farmers Journal**

Year	US wheat / bushel	Real value of 24 fold rise in CPI
1960	1.76	
1965	1.38	
1970	1.29	
1975	4.11	
1980	3.74	
1985	3.38	
1990	3.71	
1995	3.69	
2000	3.68	
2005	3.43	
2010	4.92	
2014	6.66	
2016	4.18	42.24

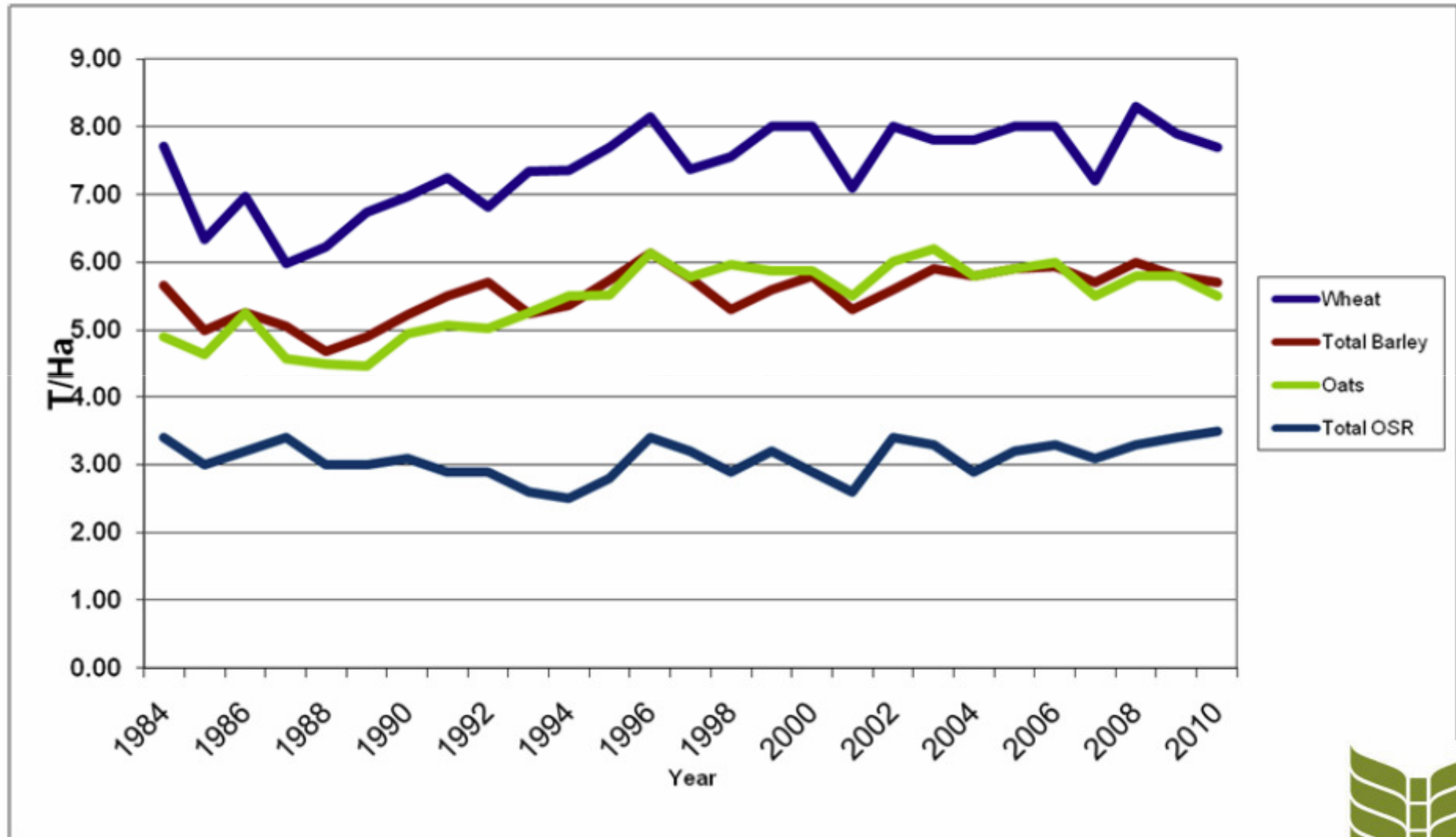
# The Gleaners



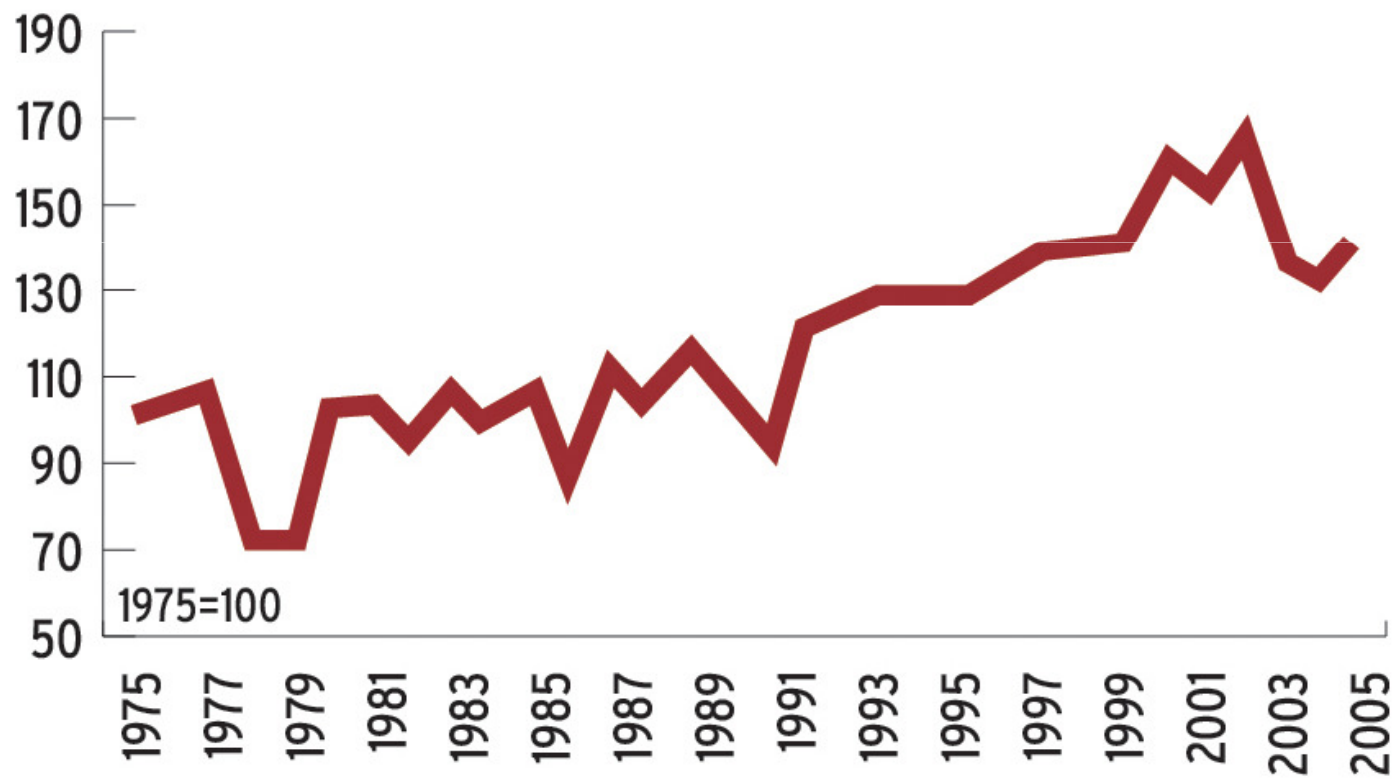
# Average Winter Wheat Yields in Selected EU Countries

	Tonnes / HA
EU 15	6.62
Ireland	9.0
The Netherlands	8.9
France	7.2
Germany	7.3
Britain	8.1
Italy	4.65

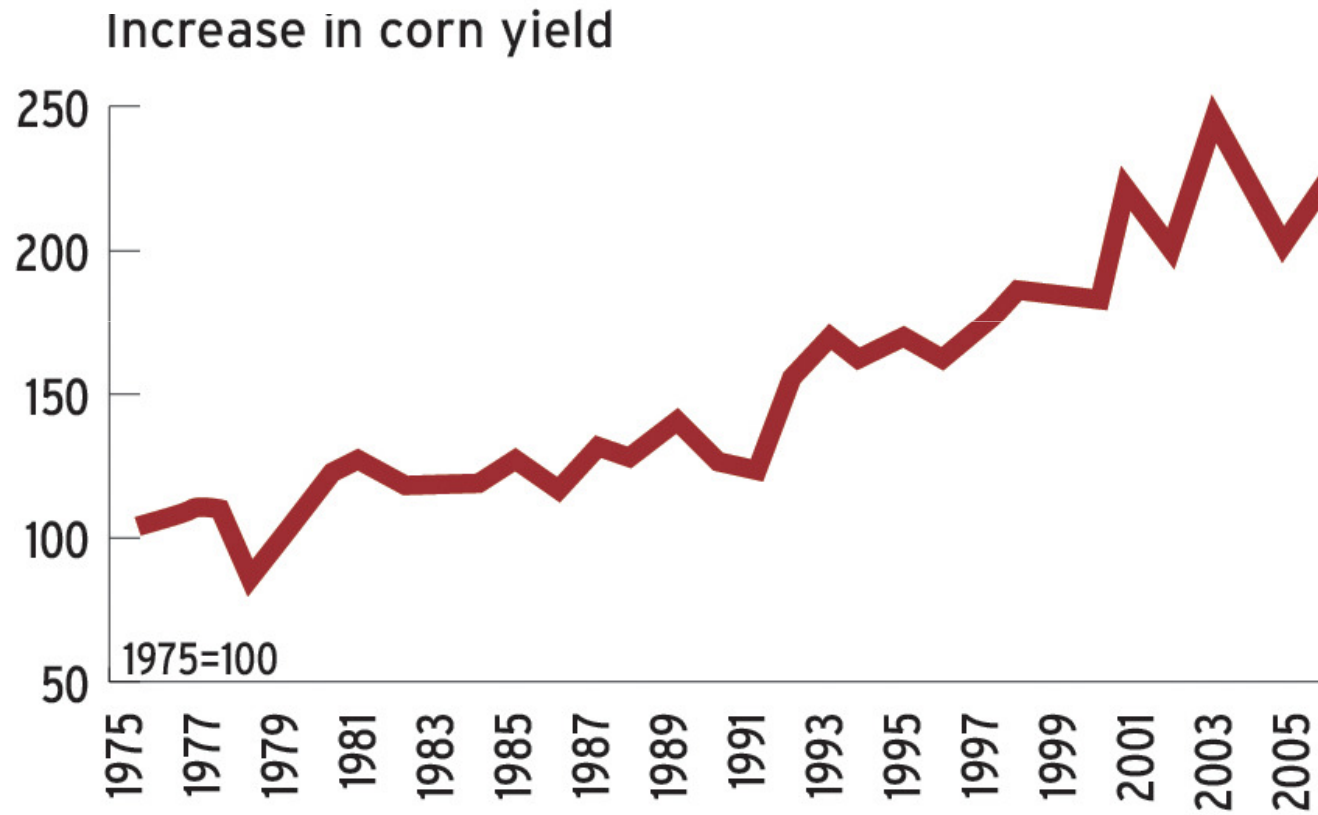
# UK arable crop yields have been static for 15 years +



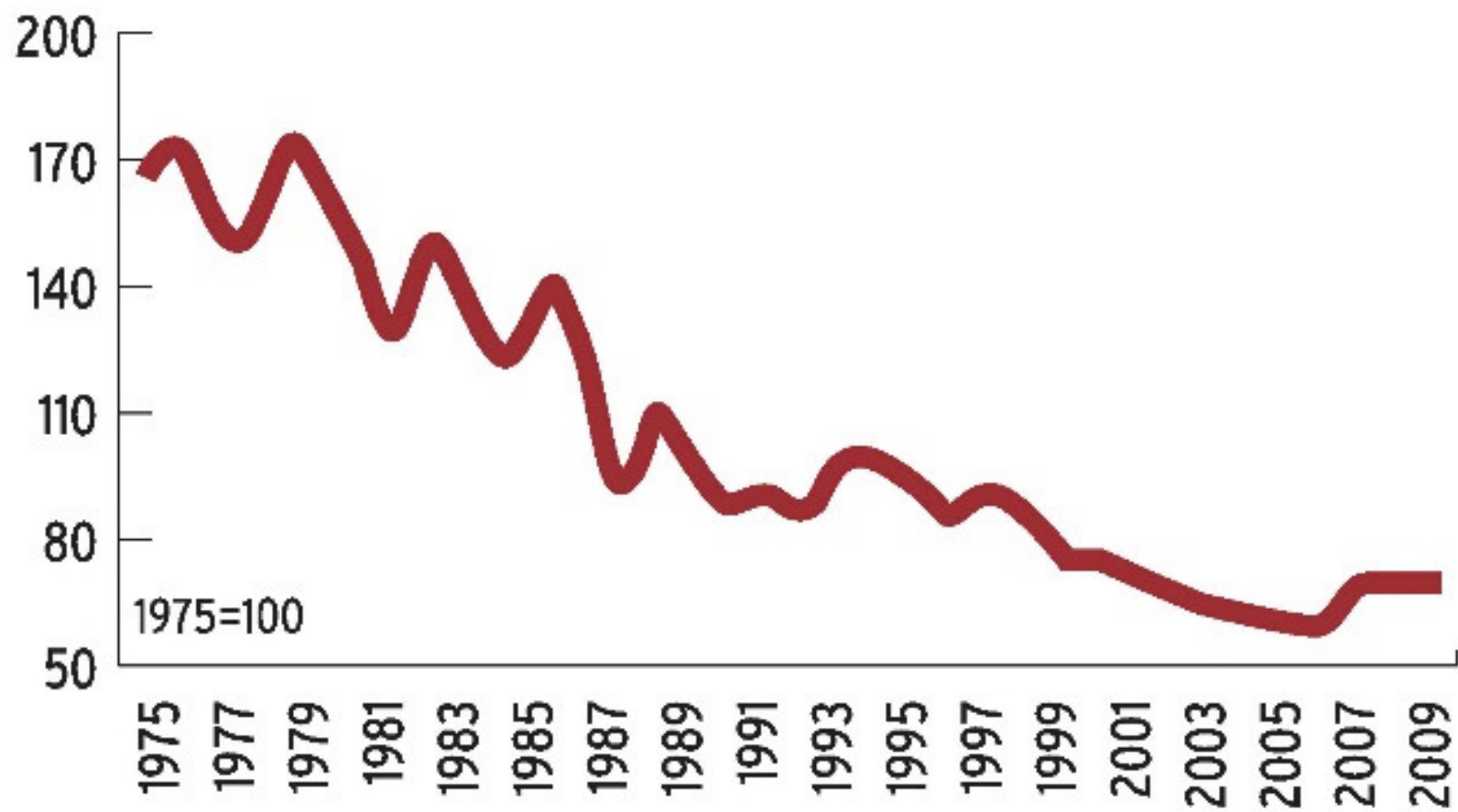
Increase in soybean yield



# Brazil - Increase in corn yield

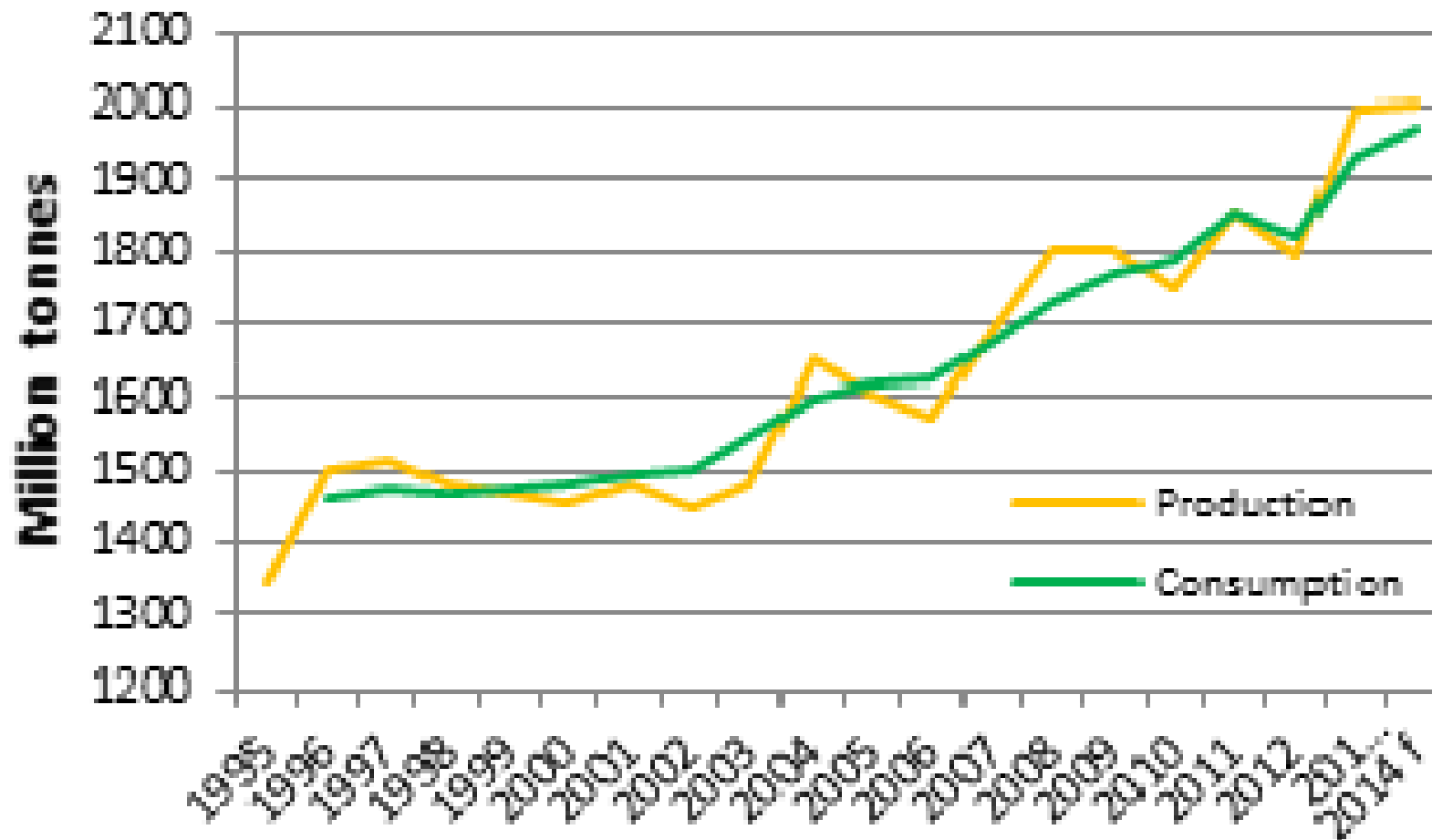


Food basket: real prices, Jan 1975-Apr 2010





## World grain production and consumption 1995 - 2014



# Irish Area Under Wheat

Year	Irish Area Under Wheat (acres)
1861	327,910
1891	59,519
1911	36,232
1961	344,800
2016	<b>180,000</b>

## Yield

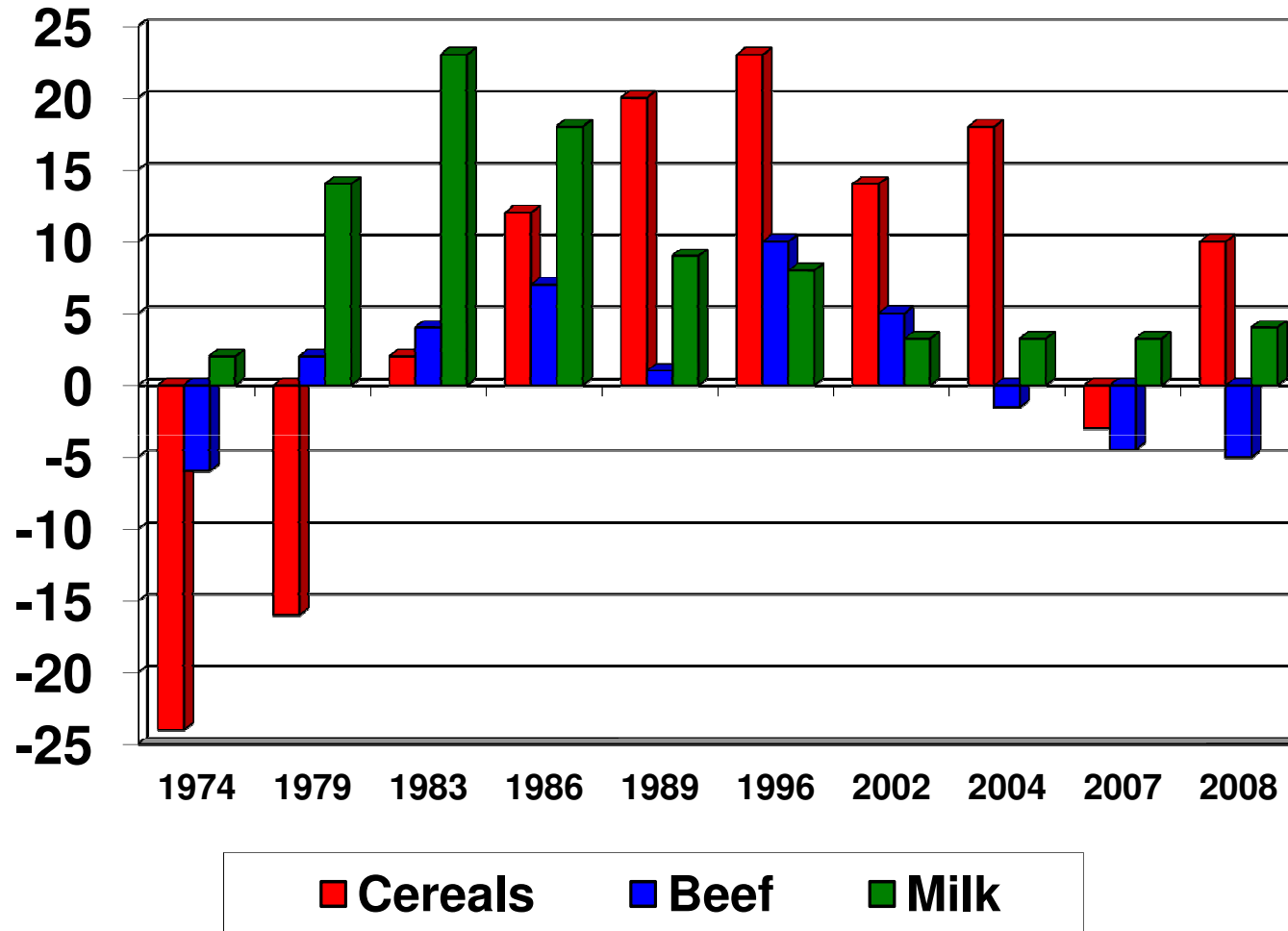
19.7 cwt to 22.4 cwt including Northern Ireland at £10/tonne in 1930's

# 1854

In 1854, corn and peas and beans .....

Co Down	179,000 acres
Second only to Co Cork's	230,742 acres

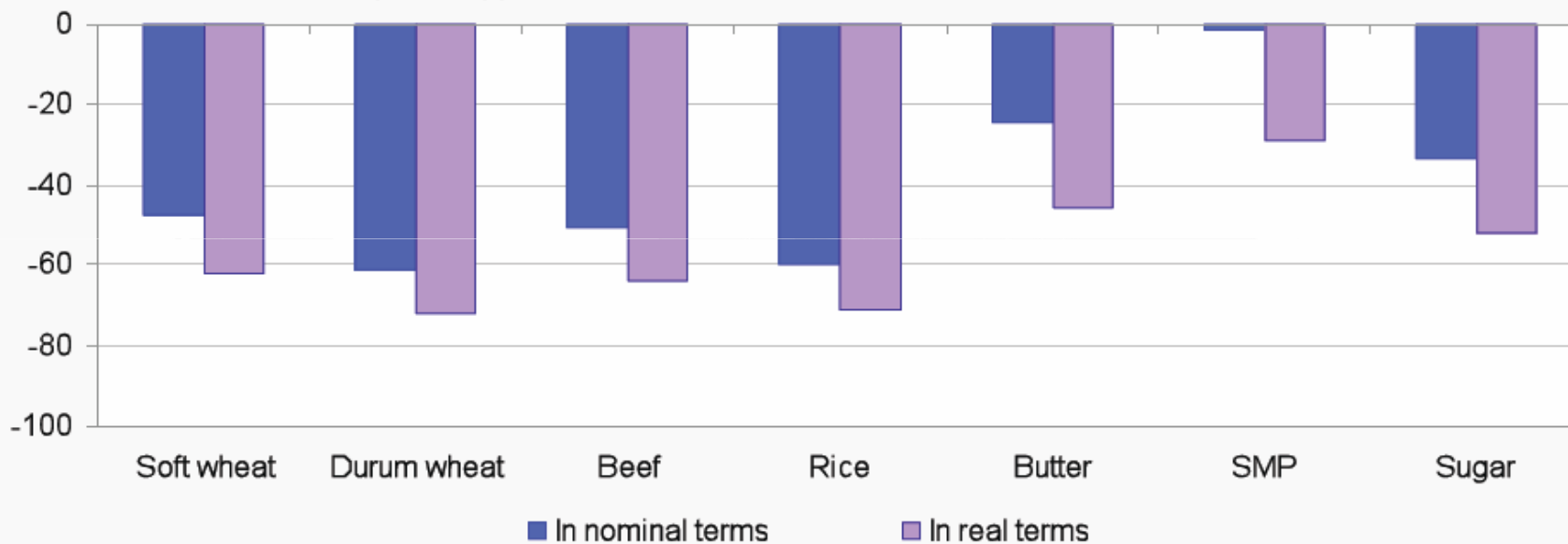
# Self – Sufficiency EU (+ or – 100%)



# Reductions in EU price support

Figure 3: Reductions in EU price support.

Cumulative % reduction in price support from 1991 to 2009



Source: DG Agriculture and Rural Development.

# Wheat / Oil Exchange Rate 1950 - 2015

The voice of Ireland's farming industry

Year	Bushel of Wheat US\$	Barrel of Oil US\$	Bushels per Barrel (Ratio)
1950	1.89	1.71	1
1960	1.58	1.85	1
1970	1.49	1.79	1
1975	4.06	11.45	3
1980	4.70	35.71	8
1985	3.70	27.37	7
1990	3.69	22.99	6
1995	4.82	17.20	4
1999	3.05	17.98	6
2001	3.45	24.33	7
2003	3.98	28.89	7
2004 *	4.20	36.00	9
2010	4.60	80.00	17
2012	8.80	110.00	12
2014	5.50	100	18
<b>2015</b>	<b>5.00</b>	<b>60</b>	<b>12</b>



**Matthew Dempsey**

**Chairman**

**The Agricultural Trust / Farmers Journal**